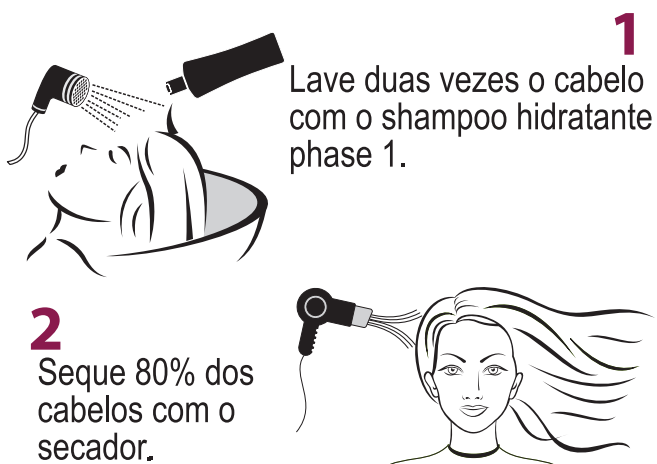


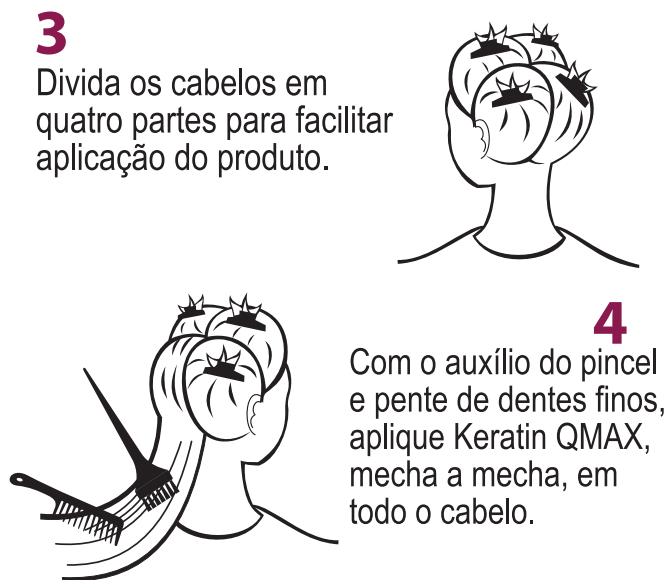
# modo de uso

## x-liso extrême lissage bresilien

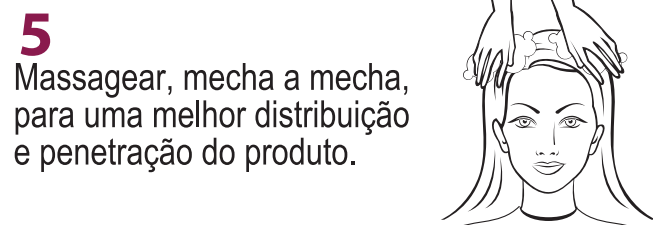
### PHASE 1 SHAMPOO HIDRATANTE



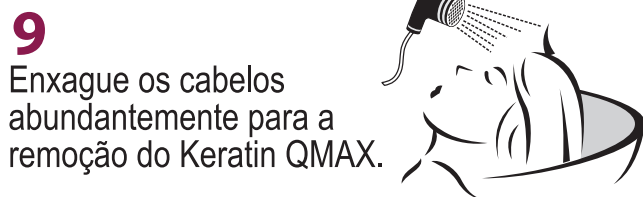
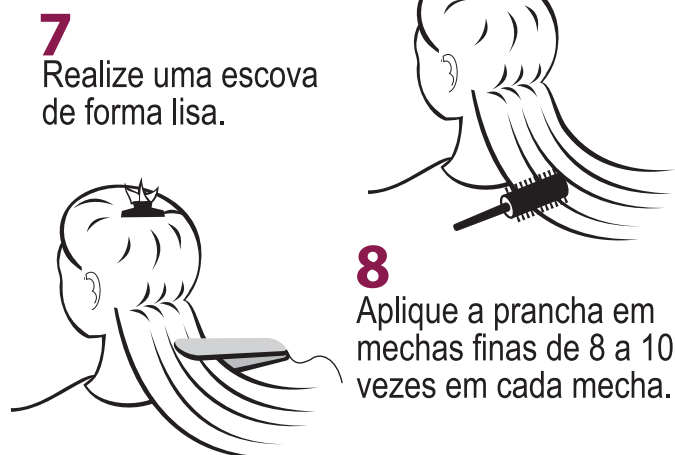
### PHASE 2 KERATIN QMAX



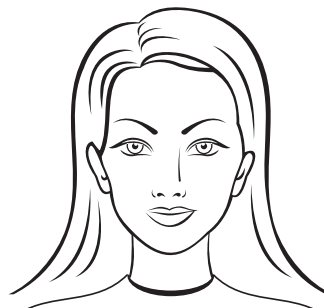
CURTO- MEDIO	LONGO	EXTRA LONGO E VOLUMOSO
50ml	100ml	150ml



**6** Deixar o produto agir de 30 a 40 minutos.



### PHASE 3 SISTEMA DE REPARAÇÃO TOTAL - SRT



Tratamento  
Concluído